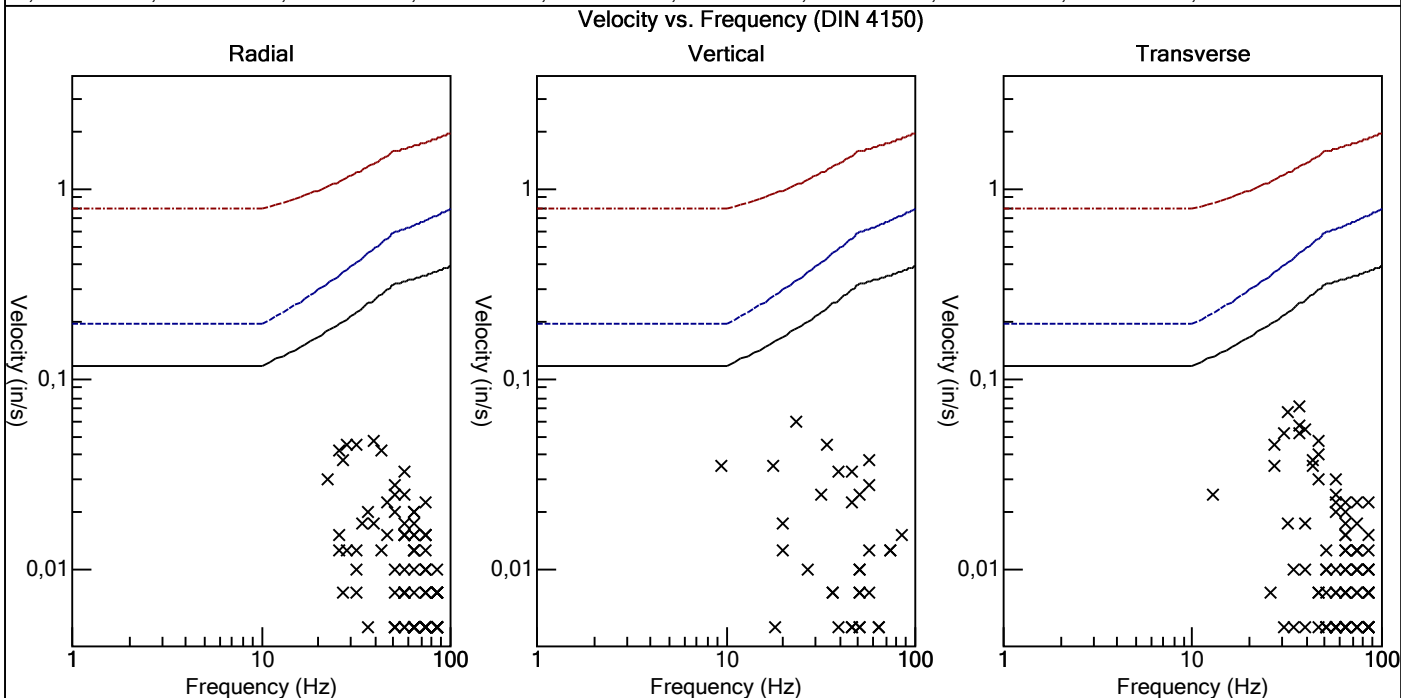
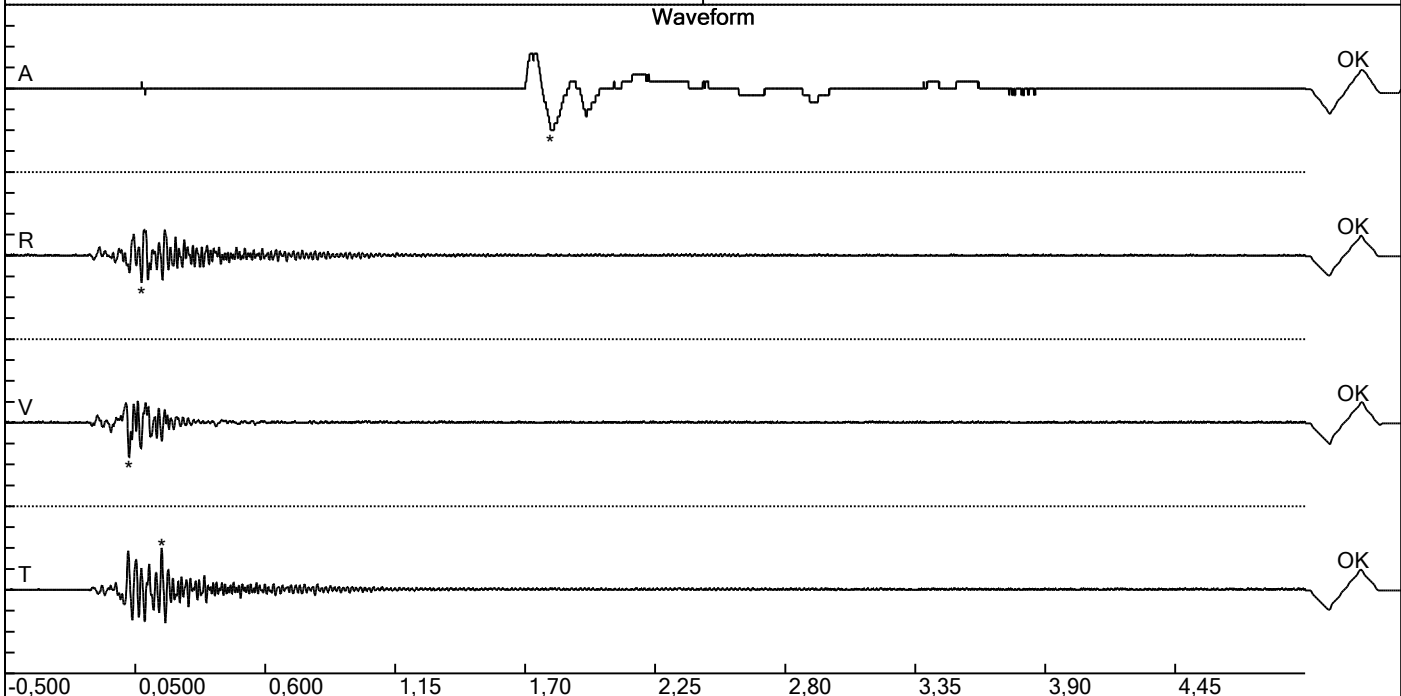


Carrière de BRS
 Oneux -3
 Tir du 03/07/2017
 Sismographe placé au
 261 Halleux
 4710 Comblain-au-Pont

Record: 2164201707031454068.dtb
 Number: 068
 Seismograph: Mini-Seis
 Type of Record: Waveform
 Date: 3/07/2017 02:54:00
 SN: 2164
 Duration: 5,50 Seconds
 Sample Rate: 1024
 Pre-Trigger: 0,5 Seconds
 Seismic Trigger: 0,0200 in/s
 Acoustic Trigger: 142,1 dB
 Voltage: 6,3

Peaks and Frequencies	Graph Information
PPV Maximum: 0,0725 in/s Acoustic: 115,6 dB @ 5,1 Hz (1,81 s) Radial: 0,0475 in/s @ 39,3 Hz (0,0771 s) Vertical: 0,0600 in/s @ 23,2 Hz (0,0234 s) Transverse: 0,0725 in/s @ 36,5 Hz (0,162 s) Last Calibration Date: 21/04/2015	Time Range: -0,500 s to 5,00 s Acoustic Scale: 0,0600 Mb/div Seismic Scale: 0,0363 in/s/div Time Intervals: 0,550 Seconds



Carrière de BRS
 Oneux -3
 Tir du 03/07/2017
 Sismographe placé au
 261 Halleux
 4710 Comblain-au-Pont

Record: 2164201707031454068.dtb
 Number: 068
 Seismograph: Mini-Seis
 Type of Record: Waveform
 Date: 3/07/2017 02:54:00
 SN: 2164
 Duration: 5,50 Seconds
 Sample Rate: 1024
 Pre-Trigger: 0,5 Seconds
 Seismic Trigger: 0,0200 in/s
 Acoustic Trigger: 142,1 dB
 Voltage: 6,3

Peaks and Frequencies	Graph Information
PPV Maximum: 0,0725 in/s Acoustic: 115,6 dB @ 5,1 Hz (1,81 s) Radial: 0,0475 in/s @ 39,3 Hz (0,0771 s) Vertical: 0,0600 in/s @ 23,2 Hz (0,0234 s) Transverse: 0,0725 in/s @ 36,5 Hz (0,162 s) Last Calibration Date: 21/04/2015	Time Range: -0,500 s to 5,00 s Acoustic Scale: 0,0600 Mb/div Seismic Scale: 0,0363 in/s/div Time Intervals: 0,550 Seconds

